

Cylindrical SERS Substrates

(Surface-enhanced Raman Spectroscopy)

Specification (Product number: cSERS[©]-Ag-1)

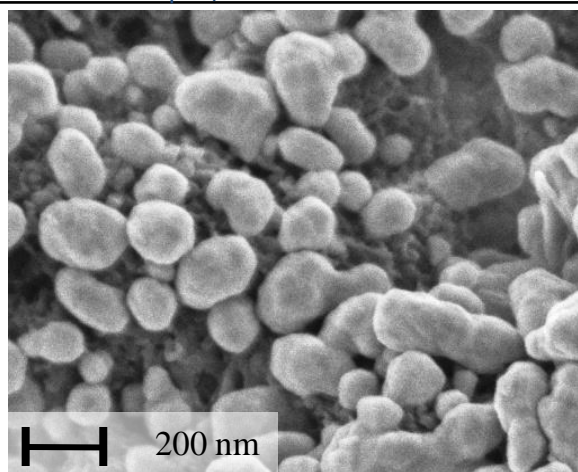
Dimension of cSERS Substrate	I.D. = 2mm, Height = 9 mm (roughly)
Required Sample Volume	< 5 μ L
Recommended Storage Temperature	Less than 20 $^{\circ}$ C
Enhanced Metal	Nano Silver (SEM image shown below)
Application Laser	532 nm, 633 nm, 785 nm, and others

Patent: I464389, M516159, ZL2013 2 0821233.9

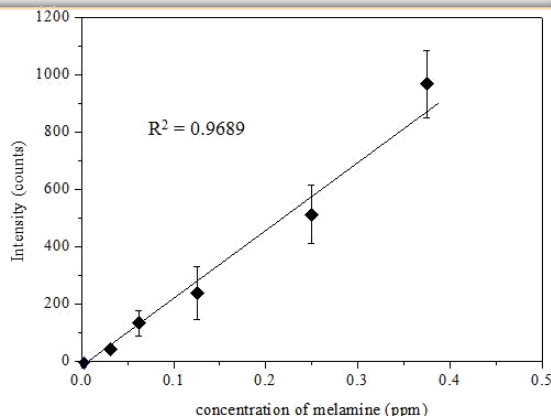
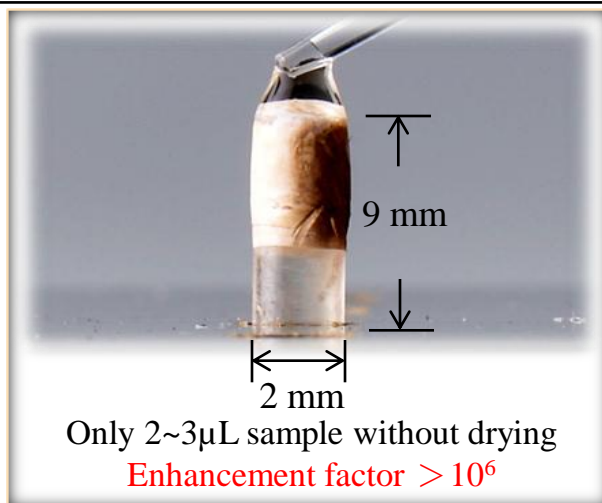
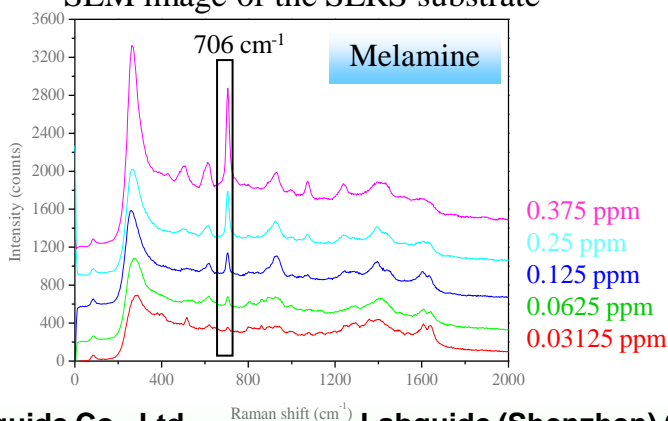
* Sales must be authorized by Labguide and law.

International papers:

- Sensitive Cylindrical SERS Substrate Array for Rapid Microanalysis of Nucleobases
- Atmospheric Pressure Plasma Jet in Organic Solution: Spectra, Degradation Effects of Solution Flow Rate and Initial pH Value
- Rapid detection of melamine in milk liquid and powder by surface-enhanced Raman scattering substrate array
- 3-min Rapid Test Peritoneal Dialysis Patient of Bacteria Infection by Raman (This paper will be announced on April)



SEM image of the SERS substrate



Labguide Co., Ltd.

Email: terry@seed.net.tw

Phone: 886-2-29406162

Address: 3F, No.37, Lane232, Hua-Shin Street, Chung-Ho District 235, New Taipei City, Taiwan, R.O.C

<http://www.labguide.com.tw>

Labguide (Shenzhen) Co., Ltd.

Email: admin@labguide.com.tw

Phone: 86-075527750787

Address: A1303, Xinbao Yuan, Xin'an Hu Business Center, No.8 Of Xinzhen West Road, Bao'an District, Shenzhen, China

<http://www.labguide.com.cn>

Labguide (Wuxi) Co., Ltd.

Email: admin@labguide.com.cn

Phone: 0510-82611787

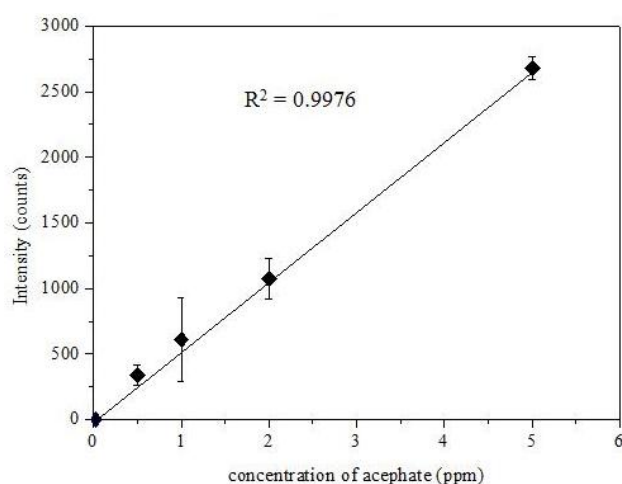
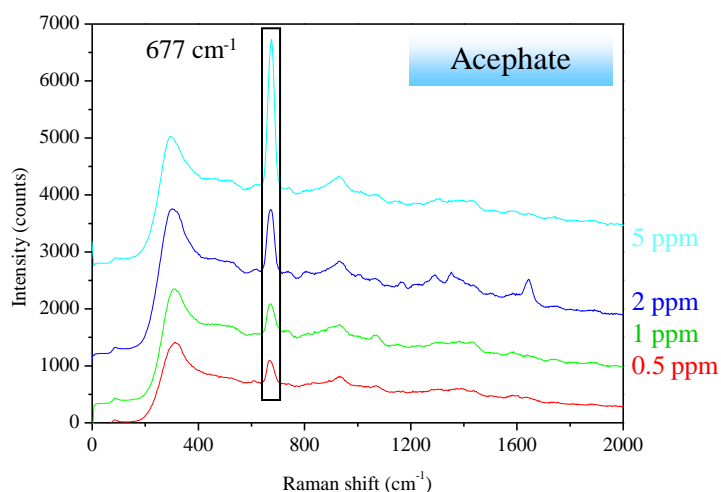
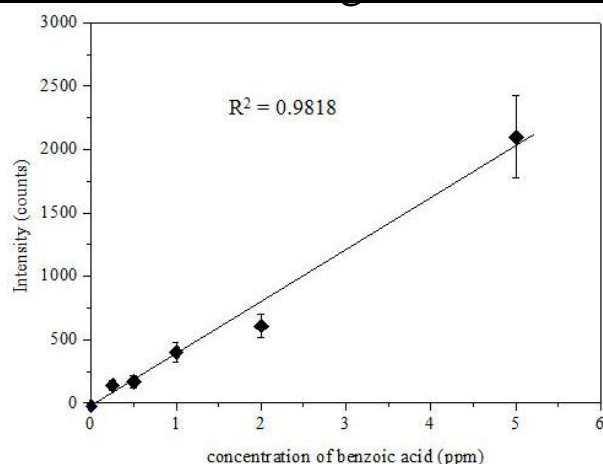
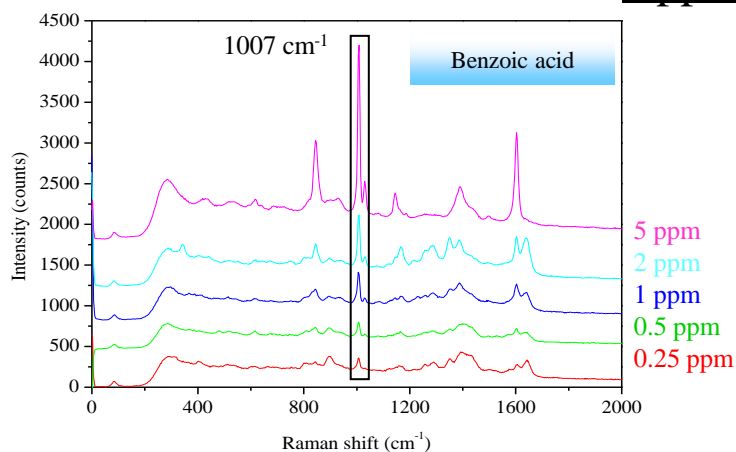
Address: Chunshen Road Beitang JinMa mall A703 District No.55, JinMa mall, Wuxi, Jiangsu province

<http://www.labguide.com.cn>

Cylindrical SERS Substrates

(Surface-enhanced Raman Spectroscopy)

Application: cSERS[®] -Ag-Food Additive



Labguide Co.,Ltd.

Email: terry@seed.net.tw

Phone: 886-2-29406162

Address: 3F, No.37, Lane232,
Hua-Shin Street, Chung-Ho
District 235, New Taipei City,
Taiwan, R.O.C

<http://www.labguide.com.tw>

Labguide (Shenzhen) Co.,Ltd.

Email: admin@labguide.com.tw

Phone: 86-075527750787

Address: A1303, Xinbao Yuan, Xin'an
Hu Business Center, No.8 Of Xinzhen
West Road, Bao'an District,
Shenzhen, China

<http://www.labguide.com.cn>

Labguide (Wuxi) Co., Ltd.

Email: admin@labguide.com.cn

Phone: 0510-82611787

Address: Chunshen Road Beitang
JinMa mall A703 District No.55,
JinMa mall, Wuxi, Jiangsu
province

<http://www.labguide.com.cn/>